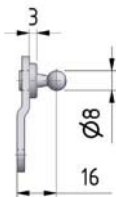
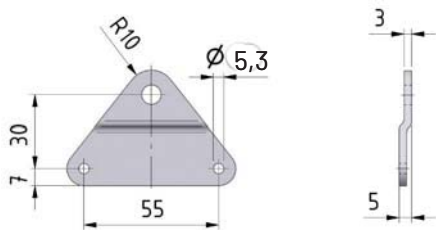
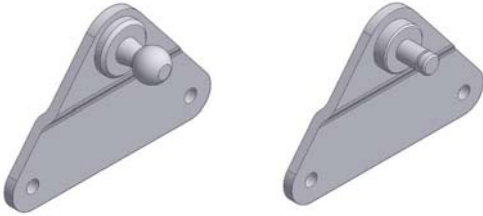


# Seitenbeschlag

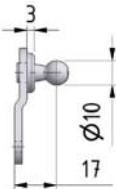
**Material** Stahl blau verzinkt

**Optional** Edelstahl W.1.4404/AISI 316 (V4)

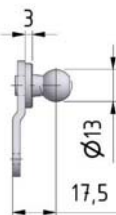
## BA 01 / BA 01 V4



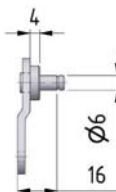
BA 01 K08  
BA 01 K08 V4  
Festigkeit max. 500 N



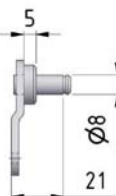
BA 01 K10  
BA 01 K10 V4  
Festigkeit max. 800 N



BA 01 K13  
BA 01 K13 V4  
Festigkeit max. 1200 N

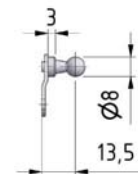
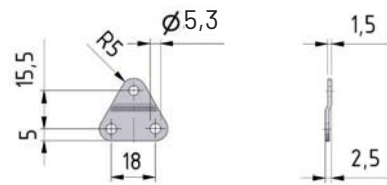


BA 01 Z06  
BA 01 Z06 V4  
Festigkeit max. 500 N

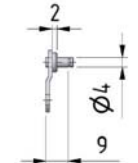


BA 01 Z08  
BA 01 Z08 V4  
Festigkeit max. 1200 N

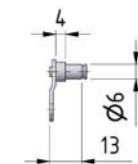
## BB 01 / BB 01 V4



BB 01 K08  
BB 01 K08 V4  
Festigkeit max. 180 N



BB 01 Z04  
BB 01 Z04 V4  
Festigkeit max. 180 N



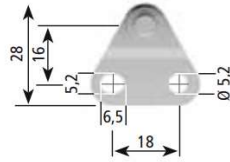
BB 01 Z06  
BB 01 Z06 V4  
Festigkeit max. 180 N

## Seitenbeschlag

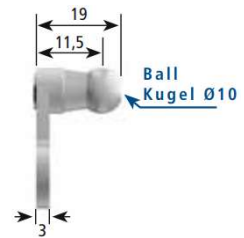
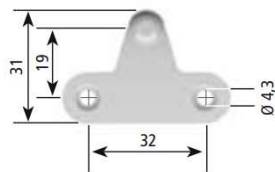
Material Stahl blau verzinkt



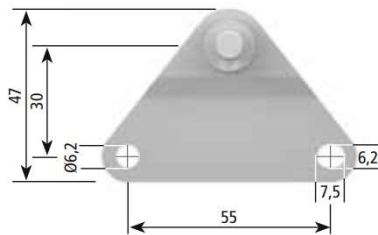
Part No. / Bestell-Nr. **8268WB**  
 $F_{max}^* = 700 \text{ N}$



Part No. / Bestell-Nr. **7592TM**  
 $F_{max}^* = 350 \text{ N}$



Part No. / Bestell-Nr. **8264WW**  
 $F_{max}^* = 1000 \text{ N}$



Part No. / Bestell-Nr. **8265WQ**  
 $F_{max}^* = 1000 \text{ N}$

