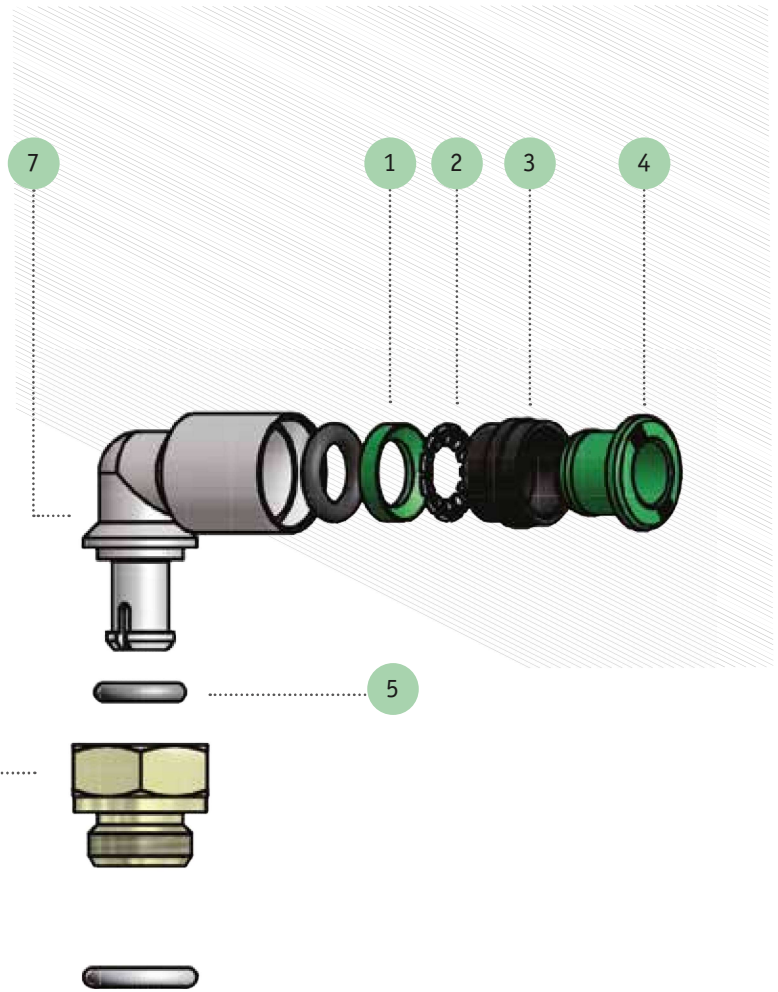


- 1 HALTERING
LOCK RING
- 2 HALTEZANGE
CRIMPING GRIPPER
- 3 HALTERING
LOCK RING
- 4 DRUCKRING
THRUST SLEEVE
- 5 O-RING DICHTUNG
O-RING SEAL
- 6 DREHBASIS
SWIVEL BASE
- 7 VERSCHRAUBUNGSGEHÄUSE
FITTING BODY



MAIN SERIE



TN SERIE
AUF ANFRAGE



TS SERIE
AUF ANFRAGE





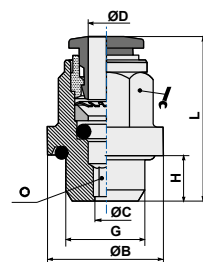
TA SERIE
AUF ANFRAGE

ART. **TB01**

Steck-Einschraubverschraubung, gerade mit O-Ring
Straight male adaptor (parallel)



CODE	ØD	G	ØC	ØB	H	L		
TB010418	4	1/8	2,5	14,0	5,5	19,0	10	2
TB010414	4	1/4	2,5	17,5	6,5	20,8	1	
TB010618	6	1/8	4,0	14,0	5,5	24,5	12	4,0
TB010614	6	1/4	4,0	17,5	6,5	26,0	12	4
TB010818	8	1/8	5,0	14,0	5,5	25,7	14	5,0
TB010814	8	1/4	6,0	17,5	6,5	27,2		
TB011014	10	1/4	7,0	17,5	6,5	28,7	18	7,0

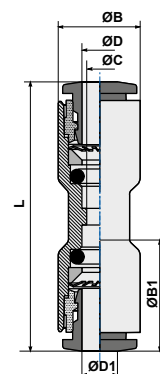


ART. **TB03**

Steck-Verbinder
Straight connector



CODE	ØD	ØD1	ØC	ØB	ØB1	L
TB030400	4	4	3	9,5		
TB030406	4	6	3	9,5	1	
TB030600	6	6	5	11,5	11,5	35,6
TB030608	6	8	5	11,5	13,5	36,
TB030800	8	8	7	13,5	13,5	38,0
TB030810	8	10	7	13,5	17,0	32,5
TB031000	10	10	9	17,0	17,0	42,
TB031012	10	12	9	17,0	20,0	44,0
TB031200	12	12	10	20,0	20,0	46,2

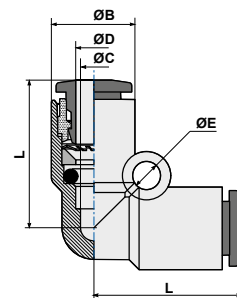


ART. **TB04**

Steck-Winkelverbinder
L connector



CODE	ØD	ØC	ØB	L	ØE
TB040400	4	3	9,5	17,2	3,
TB040600	6	5	11,5	20,8	3,2
TB040800	8	7	13,5	2	
TB041000	10	9	17,0	26,4	4,
TB041200	12	10	20,0	28,9	4,2



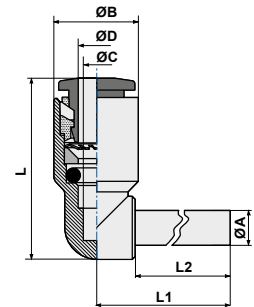


ART. **TB04LO**

Steck-Winkelverbinder I/A
Plug-in L connector



CODE	ØD	ØC	ØB	L	L1	ØA	L2
TB0404LO	4	3	9,5	17,2	20,75	4	16,7
TB0406LO	6	5	11,5	20,8	24,25	6	19,5
TB0408LO	8	7	13,5	23,0	27,25	8	21,0
TB0410LO	10	9	17,0	26,4	31,80	10	24,0
TB0412LO	12	10	20,0	28,9	36,00	12	25,0

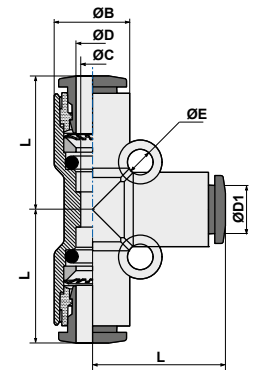


ART. **TB05**

Steck-T-Verbinder
T connector



CODE	ØD	ØD1	ØC	ØB	L
TB050400	4	4	3,0	9,	
TB050604	6	4	5,3	13	
TB050600	6	6	5,0	11,5	20,8
TB050806	8	6	7,1	14,4	22,7
TB050800	8	8	7,0	13,5	23,0
TB051008	10	8	9,3	18,4	27,9
TB051000	10	10	9,0	17,0	26,4
TB051210	12	10	10,0	21,0	29,9
TB051200	12	12	10,0	20,0	28,9

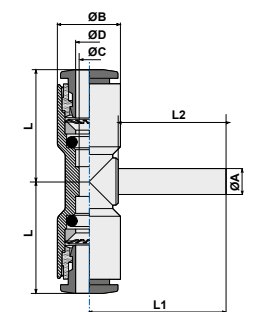


ART. **TB05LO**

Steck-T-Verbinder I/A
Plug-in T connector (center)



CODE	ØD	ØC	ØB	L	L1	ØA	L2
TB0504LO	4	3	9,5	17,2	20,75	4	16,7
TB0506LO	6	5	11,5	20,8	24,25	6	19,5
TB0508LO	8	7	13,5	23,0	27,25	8	21,0
TB0510LO	10	9	17,0	26,4	31,80	10	24,0
TB0512LO	12	10	20,0	28,9	36,00	12	25,0

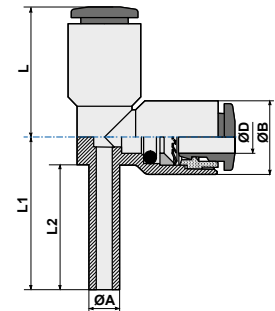


ART. **TB05V0**

Steck-L-Verbinder I/A
Plug-in T connector (lateral)



CODE	ØD	ØB	L	L1	ØA	L2
TB0504V0	4	9,5	17,2	20,		
TB0506V0	6	11,5	20,8	24,25	6	19,5
TB0508V0	8	13,5	23,0	27,25	8	21,0
TB0510V0	10	17,0	26,4	31,80	10	24,0
TB0512V0	12	20,0	28,9	36,00	12	25,0

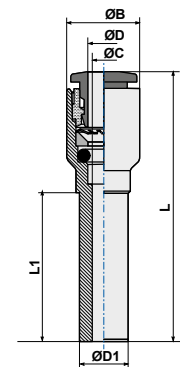


ART. **TB08**

Reduzierverbindung
Reducer



CODE	ØD1	ØD	ØC	ØB	L	L1
TB080604	6	4	3	9,5	35,5	19,5
TB080804	8	4	3	9,5	37,0	21,0
TB081004	10	4	3	9,5	40,0	24,0
TB081204	12	4	3	9,5	41,0	25,
TB080806	8	6	5	11,5	39,05	23,0
TB081006	10	6	5	11,5	42,05	24,0
TB081206	12	6	5	11,5	43,05	25,0
TB081008	10	8	7	13,5	43,0	26,25
TB081208	12	8	7	13,5	44,0	25,0
TB081210	12	10	9	17,0	46,15	27

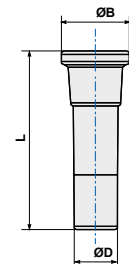


ART. **TB09**

Steckverschluss
Plug



CODE	ØD	ØB	L
T090400	4	7,0	25,0
T090600	6	9,5	27
T090800	8	12,0	30,0
T091000	10	14,0	32,5
T091200	12	16,0	35,0



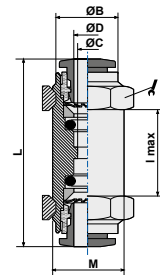


ART. **TB10**

Steck-Schottverbinder
Bulkhead connector



CODE	ØD	ØB	L	M	Imax	
TB100400	4	9,5	32,0	11x1	8	1
TB100600	6	11,5	36,1	14x1	8	
TB100800	8	13,5	38,0	16x1	10	
TB101000	10	17,5	42,3	20x1	12	24
TB101200	12	20,0	46,2	22x1	17	26

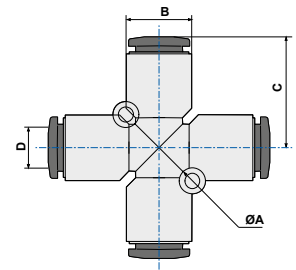


ART. **TB11**

Kreuzverbinder
Cross connector



CODE	ØD	ØB	ØA	C
TB110400	4	9,5	17,2	
TB110600	6	11,5	20,8	
TB110800	8	13,5	23,0	3
TB111000	10	17,0	26,	
TB111200	12	20,		

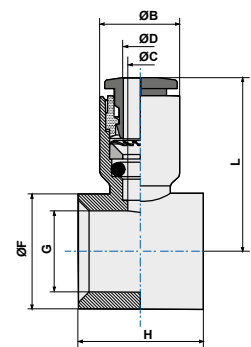


ART. **TB13**

Steck-Ringstück, 1-fach
Single banjo body



CODE	ØD	G*	ØC	ØB	H	L	ØF
TB1304M5	4	M5	3	9,5	10	19,5	8,0
TB130418	4	1/8	3	9,5	15	21,1	14,
TB130618	6	1/8	5	11,5	15	24,3	14,0
TB130614	6	1/4	5	11,5	17	25,5	18
TB130818	8	1/8	7	13,5	15	24,8	14
TB130814	8	1/4	7	13,5	17	26,5	18,0
TB130838	8	3/8	7	13,5	20	28,0	21,3
TB131014	10	1/4	9	17,0	17	28,4	18,0
TB131038	10	3/8	9	17,0	20	29,9	21,3
TB131012	10	1/2	9	17,0	24	30,0	26,0
TB131238	12	3/8	10	20,0	20	31,4	21,3
TB131212	12	1/2	10	20,0	24	34,9	26,0

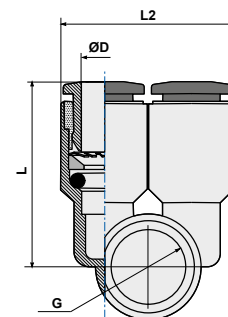


ART. **TB13B**

Y-Steck-Ringstück
Single branch body



CODE	ØD	G*	H	L	L2
TB13B04M5	4	M5	10	19,5	19
TB13B0618	6	1/8	15	24,	
TB13B0814	8	1/4	17	26,	
TB13B1038	10	3/8	20	29,9	34
TB13B1212	12	1/2	24	34,9	40

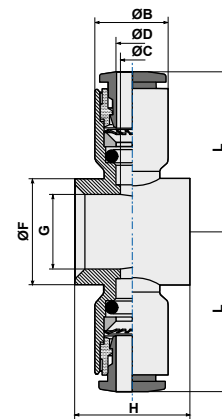


ART. **TB14**

T-Steck-Ringstück
Double banjo body




CODE	ØD	G*	ØC	ØB	H	ØF	L
TB1404M5	4	M5	3	9,5	10	8,0	19,
TB140418	4	1/8	3	9,5	15	14,0	21,1
TB140618	6	1/8	5	11,5	15	14,0	24
TB140614	6	1/4	5	11,5	17	18,0	25,5
TB140818	8	1/8	7	13,5	15	14,0	24,8
TB140814	8	1/4	7	13,5	17	18,0	26,5
TB140838	8	3/8	7	13,5	20	21,3	28,0
TB141014	10	1/4	9	17,0	17	18,0	28,
TB141038	10	3/8	9	17,0	20	21,3	29,
TB141012	10	1/2	9	17,0	24	26,0	30
TB141238	12	3/8	10	20,0	20	21,3	31,4
TB141212	12	1/2	10	20,0	24	26,0	34,9

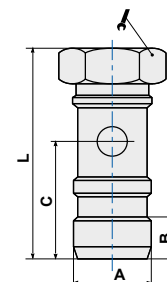


ART. **407**

Hohlschraube, 1-fach mit O-Ring
Banjo stem single with O-Ring



CODE	A	B	C	L	
40718	1/8	4,5	13,75	25	14
40714	1/4	9,9	16,7	30	17
40738	3/8	6	18	34	22
40712	1/2	7,4	21,5	35,5	27



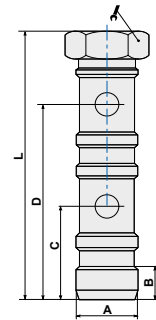


ART. **408**

Hohlschraube, 2-fach mit O-Ring
Banjo stem double with O-Ring



CODE	A	B	C	D	L	
40818	1/8	4,5	13	29	40	14
40814	1/4	6	16,5	33,5	47	17
40838	3/8	8,5	18	37,6	52,5	22
40812	1/2	7,4	21,5	45	63	27

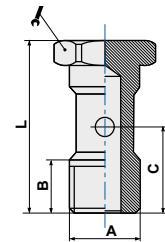


ART. **409**

Hohlschraube, 1-fach mit Innengewinde
Banjo stem single



CODE	A	B	C	L	
40918	1/8	9	15	28	14
40914	1/4	11	18	33	17

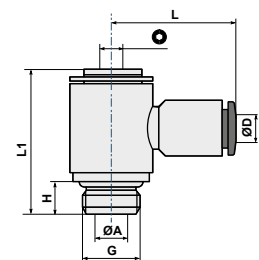


ART. **TB15**

Steck-Winkelverschraubung mit Innensechskant
Complete single banjo



CODE	ØD	G	ØA	H	L1	L	
TB1504M5	4	M5	2,0	4,0	17,8	19,5	2,5
TB150418	4	1/8	5,5	5,5	24,5	21,1	3,0
TB150618	6	1/8	5,5	5,5	24,5	24,3	3,0
TB150614	6	1/4	7,8	6,5	28,0	25,5	4,0
TB150818	8	1/8	5,5	5,5	24,5		
TB150814	8	1/4	7,8	6,5	28,0	26,5	4,
TB150838	8	3/8	10,0	7,5	32,5	2	
TB151014	10	1/4	7,8	6,5	28,0	28,4	4,0
TB151038	10	3/8	10,0	7,5	32,5	29,9	5,0
TB151012	10	1/2	12,0	9,0	38,8	30,0	8,0
TB151238	12	3/8	10,0	7,5	32,5	31,4	5,0
TB151212	12	1/2	12,0	9,0	38,8	34,9	8,0

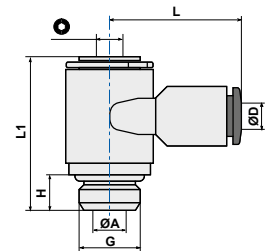


ART. **TB15B**

Doppel-Steck-Winkelverschraubung mit Innensechskant
Single branch universal male L



CODE	ØD	G	ØA	H	L1	L	⊙
TB15B04M5	4	M5	2,0	4,0	17,8	19,5	2,5
TB15B0618	6	1/8	5,5	5,5	24,5	24,3	
TB15B0814	8	1/4	7,8	6,5	28,0	26,5	4,0
TB15B1038	10	3/8	10,0	7,5	32,5	29,9	5,0
TB15B1212	12	1/2	12,0	9,0	38,8	34,9	8,0

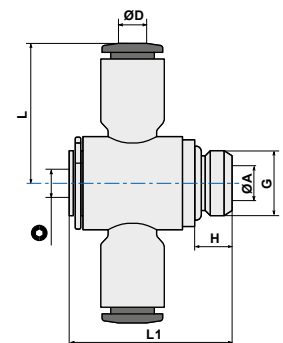


ART. **TB16**

T-Steckverschraubung mit Innensechskant
Complete double banjo



CODE	ØD	G	ØA	H	L1	L	⊙
TB1604M5	4	M5	2,0	4,0	17,8	19,5	2,5
TB160418	4	1/8	5,5	5,5	24,5	21,	
TB160618	6	1/8	5,5	5,5	24,5	24,3	3,0
TB160614	6	1/4	7,8	6,5	28,0	25,	
TB160818	8	1/8	5,5	5,5	24,5	24,8	3,
TB160814	8	1/4	7,8	6,5	28,0	26,5	4,0
TB160838	8	3/8	10,0	7,5	32,5	28,0	5,0
TB161014	10	1/4	7,8	6,5	28,0	28,4	4,0
TB161038	10	3/8	10,0	7,5	32,5	29,9	5,0
TB161012	10	1/2	12,0	9,0	38,8	30,0	8,0
TB161238	12	3/8	10,0	7,5	32,5	31,4	5,0
TB161212	12	1/2	12,0	9,0	38,8	34,9	8,0

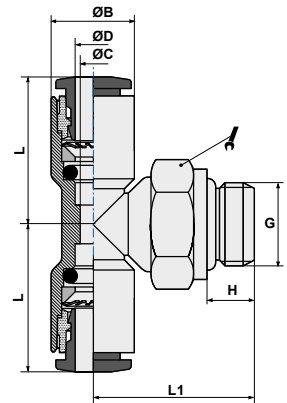


ART. **TB20**

T-Steckverschraubung mit Außensechskant und O-Ring
Swivel male stud T parallel



CODE	ØD	G	ØB	H	L	L1	
TB2004M3	4	M3	9,5	3,0	17,2	15,0	8
TB2004M5	4	M5	9,5	4,0	17,2	17,0	8
TB200418	4	1/8	9,5	5,5	17,2	18	
TB200414	4	1/4	9,5	7,5	17,2		
TB200438	4	3/8	11,0	7,5	19,0	27,3	2
TB2006M5	6	M5	9,5	4,0	20,8	17,0	8
TB200618	6	1/8	11,5	5,5	20,8	18,	
TB200614	6	1/4	11,5	7,5	20,		
TB200638	6	3/8	13,0	7,5	19,5	27,5	2
TB200612	6	1/2	13,0	10	19,5	30	
TB200818	8	1/8	13,5	5,5	23,0	20,0	1
TB200814	8	1/4	13,5	6,5	23,0	20,4	16
TB200838	8	3/8	13,5	7,5	23,0	24,8	
TB200812	8	1/2	15,0	10	22,5	32,	
TB201018	10	1/8	19,0	5,5	28,5	32,3	17
TB201014	10	1/4	17,0	7,5	26,4	23,2	16
TB201038	10	3/8	19,0	10,5	28,5	38,0	17
TB201012	10	1/2	17,0	9	26,4	31,1	2
TB201218	12	1/8	21,5	5,5	29,5	33,5	27
TB201214	12	1/4	21,5	7,5	29,5	38,5	21
TB201238	12	3/8	20,0	7,5	28,9	26,3	18
TB201212	12	20	20,0	11	28,9	29,3	21

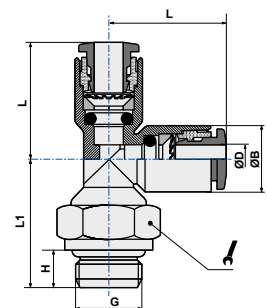


ART. **TB21**

L-Steckverschraubung mit Außensechskant und O-Ring
Swivel male branch T parallel



CODE	ØD	G	ØB	H	L	L1	
TB2104M3	4	M3	9,5	3	12,2	15,0	8
TB2104M5	4	M5	9,5	4	12,2	17,0	8
TB210418	4	1/8	9,5	5,5	17,2	18,5	
TB210414	4	1/4	9,5	7,5	17,2	20,4	16
TB210438	4	3/8	11,0	7,5	19	27,3	20
TB2106M5	6	M5	9,5	4	20,8	1	
TB210618	6	1/8	11,5	5,5	20,8	18,5	13
TB210614	6	1/4	11,5	7,5	20,8	20,4	
TB210638	6	3/8	13,0	7,5	19,7	27,5	20
TB210612	6	1/2	13,0	10	19,7	30	2
TB210818	8	1/8	13,5	5,5	23	20	13
TB210814	8	1/4	13,5	7,5	23	20,4	16
TB210838	8	3/8	13,5	9	23	24,	
TB210812	8	1/2	14,4	9	22,5	32,5	24
TB211018	10	1/8	19,0	5,5	27,8	32,5	17
TB211014	10	1/4	17,0	6,5	26,4	23,2	16
TB211038	10	3/8	19,0	7,5	28,5	38,5	17
TB211012	10	1/2	17,0	10	26,4	31,1	21
TB211218	12	1/8	21,0	5,5	29,5	33,5	21
TB211214	12	1/4	21,0	7,5	29,5	36	21
TB211238	12	3/8	20,0	7,5	28,9	26,3	18
TB211212	12	1/2	20,0	9	28,9	31,1	21

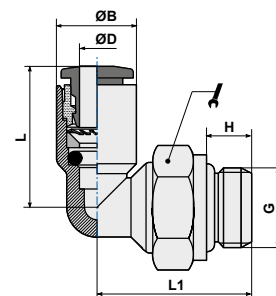


ART. **TB22**

Steck-Winkelverschraubung mit Außensechskant und O-Ring
Swivel L male adaptor parallel



CODE	ØD	G	ØB	H	L	L1	
TB2204M3	4	M3	9,5	4	17,2	17	8
TB2204M5	4	M5	9,5	4	17,2	17	8
TB220418	4	1/8	9,5	5,5	17,2	18,5	1
TB220414	4	1/4	9,5	6,5	17,2	20,4	16
TB2206M5	6	M5	11,5	4	20,8	17	8
TB220618	6	1/8	11,5	5,5	20,8	18	
TB220614	6	1/4	11,5	6,5	20,8	20,4	1
TB220818	8	1/8	13,5	5,5	23	20	13
TB220814	8	1/4	13,5	6,5	23	20,4	1
TB220838	8	3/8	13,5	7,5	23	24,8	18
TB221018	10	1/8	19	5,5	27,8	26	14
TB221014	10	1/4	17	6,5	26,4	23,2	16
TB221038	10	3/8	17	7,5	26,4	24,8	18
TB221012	10	1/2	17	9	26,4	31,1	2
TB221214	12	1/4	20	6,5	28,9	24,2	16
TB221238	12	3/8	20	7,5	28,9	26,3	18
TB221212	12	1/2	20	9	28,9	31,1	2

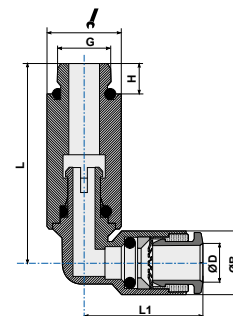


ART. **TB22L**

Steck-Winkelverschraubung, lang
Swivel longer L male adaptor parallel



CODE	ØD	G	ØB	H	L	L1	
TB22L04M5	4	M5	11,0	3,5	34,5	19,0	10
TB22L0418	4	1/8	9,5	6,0	35,7	17,2	13
TB22L06M5	6	M5	13,0	3,5	36,4	19,2	12
TB22L0618	6	1/8	11,5	6,0	35,7	20,8	13
TB22L0818	8	1/8	13,5	6,0	38,0	23,0	13
TB22L0814	8	1/4	15,0	7,5	44,3	22	

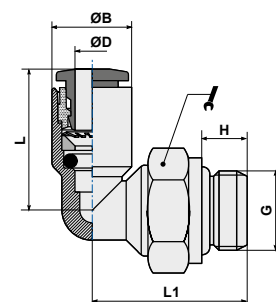


ART. **TB22T**

Steck-Winkelverschraubung Kunststoff, mit Außensechskant
Swivel L technopolymer male adaptor



CODE	ØD1	G	ØB	H	L	L1	
TB22T0418	4	1/8	9,5	5,5	17,2	18,5	14
TB22T0414	4	1/4	9,5	6,5	17,2	20,4	16
TB22T0618	6	1/8	11,5	5,5	20,8	18,5	14
TB22T0614	6	1/4	11,5	6,5	20,8	20,4	
TB22T0818	8	1/8	13,5	5,5	23,0	20,0	14
TB22T0814	8	1/4	13,5	6,5	23,0	20,4	1
TB22T1014	10	1/4	17,0	6,5	26,4	23,2	16
TB22T1214	12	1/4	20,0	6,5	28,9	24,2	16



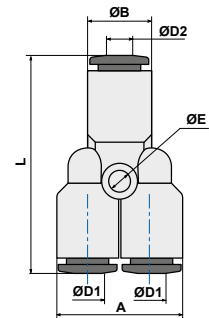


ART. **TB23**

Y-Steckverbinder
Y connector




CODE	ØD1	ØD2	ØE	ØB	A	L
TB230400	4	4	2,40	9,5	19	33,0
TB230406	4	6	2,40	11,5	19	35,
TB230600	6	6	2,60	11,5	23	38,
TB230608	6	8	3,20	13,5	23	39,
TB230800	8	8	2,75	16,5	27	42,5
TB230810	8	10	3,20	17,0	27	44,4
TB231000	10	10	4,30	20,0	34	50,8
TB231012	10	12	4,30	20,0	34	50,8
TB231200	12	12	4,20	20,0	40	53,2

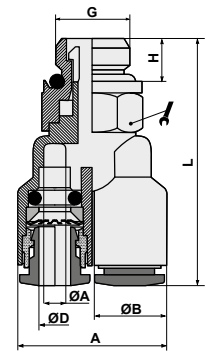


ART. **TB23G**

Y-Steckverschraubung mit Außensechskant
Y connector with swivel parallel male adapter



CODE	ØD	G	ØA	ØB	H	A	L	
TB23G04M5	4	M5	2,0	9,5	4,0	19,0	39,1	10
TB23G0418	4	1/8	3,0	9,5	5,5	19,0	20,5	13
TB23G0414	4	1/4	3,0	11,0	7,5	22,0	45,5	17
TB23G0438	4	3/8	3,0	11,0	7,5	22,0	46,0	20
TB23G0618	6	1/8	5,0	11,5	5,5	23,0	34,8	13
TB23G0614	6	1/4	5,0	11,5	6,5	23,0	36,4	16
TB23G0638	6	3/8	5,0	13,0	7,5	26,0	47,2	2
TB23G0818	8	1/8	7,0	13,5	5,5	27,0	37,5	13
TB23G0814	8	1/4	7,0	13,5	6,5	27,0	38,6	16
TB23G0838	8	3/8	6,2	14,4	7,5	29,4	50,5	20
TB23G1014	10	1/4	8,2	18,4	7,5	36,4	58,9	17
TB23G1038	10	3/8	8,2	18,4	7,5	36,4	58,9	20
TB23G1012	10	1/2	8,2	18,4	10	36,4	62,4	24
TB23G1214	12	1/4	9,5	21,0	7,5	42,0	62,3	21
TB23G1238	12	3/8	9,5	21,0	7,5	42,0	62,3	21
TB23G1212	12	1/2	9,5	21,0	10	42,0	65,3	24

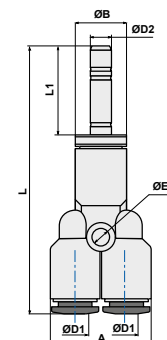


ART. **TB23L0**

Y-Steckverbinder
Y connector



CODE	ØD1	ØD2	ØB	A	ØE	L	L1
TB2304L0	4	4	9,5	19	2,40	50,0	16,7
TB2306L0	6	6	11,5	23	2,60	58,1	19,
TB2308L0	8	8	13,5	27	2,75	63,5	21,0
TB2310L0	10	10	17,0	34	4,30	74,8	24,0
TB2312L0	12	12	20,0	40	4,20	78,2	25,0

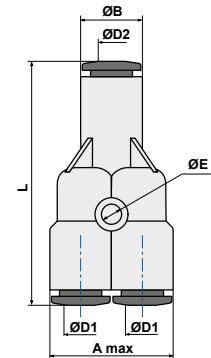


ART. **TB24**

Doppel-Y-Steckverbinder
Double Y connector



CODE	ØD1	ØD2	ØE	ØB	A max	L
TB240400	4	4	3,2	9,5	20,2	34,
TB240406	4	6	3,2	13,0	20,8	35,
TB240600	6	6	3,2	11,5	23,9	39
TB240608	6	8	3,2	13,5	26,15	41
TB240800	8	8	3,5	15,0	28,0	42,
TB240810	8	10	3,2	17,0	28,0	46,5

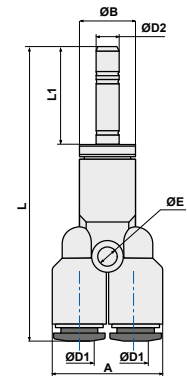


ART. **TB24L0**

Doppel-Y-Steckverbinder
Double Y connector



CODE	ØD1	ØD2	ØE	ØB	A	L	L1
TB2404L0	4	4	2,40	9,5	19	51,2	16,7
TB2406L0	6	6	2,60	11,5	23	59,1	19,5
TB2408L0	8	8	2,75	13,5	27	67,5	21,0

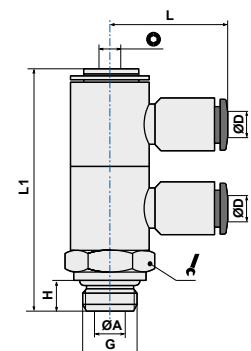


ART. **TB33**

Steck-Doppelwinkelverschraubung mit O-Ring
Swivel double banjo stem



CODE	ØD	G	ØA	H	L1	L	⊙	⌘
TB3304M5	4	M5	2,0	4,0	28,0	19,5	2,5	14
TB330418	4	1/8	5,5	5,5	43,3	21,1	3	14
TB330618	6	1/8	5,5	5,5	43,3	24,3		
TB330614	6	1/4	7,8	6,5	50,0	25,		
TB330818	8	1/8	5,5	5,5	43,3	24,8		
TB330814	8	1/4	7,8	6,5	50,0	26,5		
TB331014	10	1/4	7,8	6,5	50,0	28,4	4	18



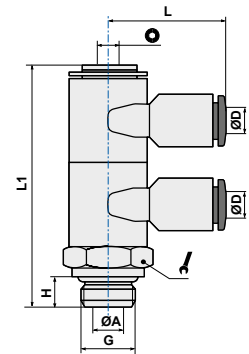


ART. **TB33B**

Steck-Winkelverschraubung mit O-Ring, 4-fach
Double branch universal male L



CODE	ØD	G	ØA	H	L1	L		
TB33B04M5	4	M5	2,0	4,0	28,0	19,5	2,5	14
TB33B0618	6	1/8	5,5	5,5	43,3	24,3		
TB33B0814	8	1/4	7,8	6,5	50,0	26,5	4	18

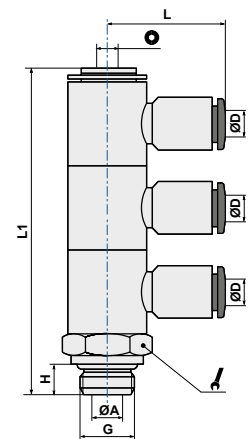


ART. **TB34**

Steck-Winkelverschraubung, 3-fach, mit O-Ring
Swivel triple banjo stem



CODE	ØD	G	ØA	H	L1	L		
TB340418	4	1/8	5,5	5,5	58,4	21,1	3	14
TB340618	6	1/8	5,5	5,5	58,4	24,3	3	14
TB340818	8	1/8	5,5	5,5	58,4	24,8	3	1
TB340614	6	1/4	7,8	6,5	67	25,5	4	1
TB340814	8	1/4	7,8	6,5	67	26,5	4	1
TB341014	10	1/4	7,8	6,5	67	28,4	4	



ART. **TB34B**

Steck-Winkelverschraubung, 6-fach, mit O-Ring
Triple branch universal male L



CODE	ØD	G	ØA	H	L1	L		
TB34B0618	6	1/8	5,5	5,5	58,4	24,3	3	1
TB34B0814	8	1/4	7,8	6,5	67	26,5	4	18

