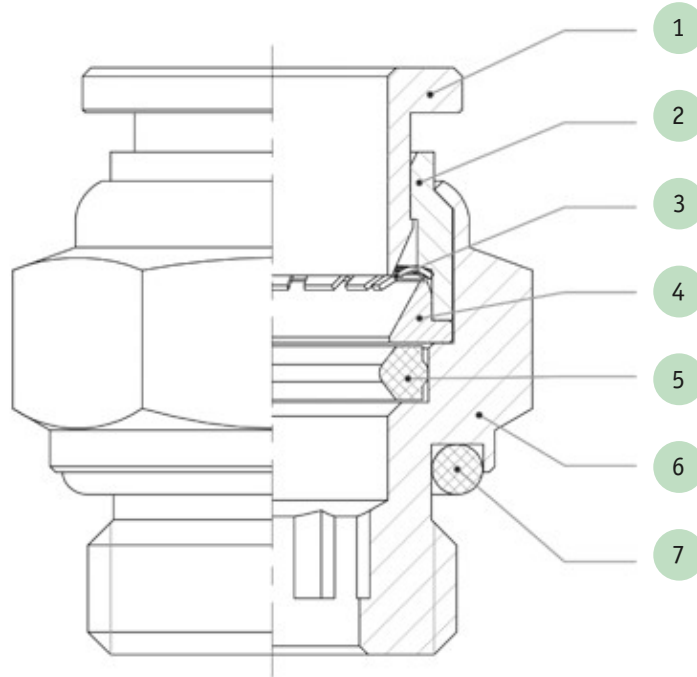




- 1 DRUCKRING
THRUST SLEEVE
- 2 HALTERING
LOCK RING
- 3 HALTEZANGE
CRIMPING GRIPPER
- 4 DISTANZRING
SUPPORTING RING
- 5 DICHTUNG
SEAL PACKING
- 6 VERSCHRAUBUNGSGEHÄUSE
FITTING BODY
- 7 O-RING DICHTUNG
O-RING SEAL

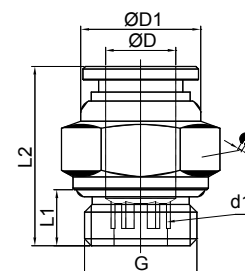


ART. **SSC-G**

Steck-Einschraubverschraubung, gerade mit O-Ring
 Straight male parallel adaptor



CODE	ØD	G	L1	L2	⊙	🔑
SSC04-M5	4	M5	4	19,3	2	10
SSC-G04-18	4	1/8	5,5	17,3	3	13
SSC06-M5	6	M5	4	20,6	2	12
SSC-G06-18	6	1/8	5,5	1		
SSC-G06-14	6	1/4	6,5	18,8	4	16
SSC-G08-14	8	1/8	5,5	23,2	5	
SSC-G08-18	8	1/4	6,5	2		
SSC-G10-14	10	1/4	6,5			
SSC-G10-38	10	3/8	7,5	22,9	8	20
SSC-G12-38	12	3/8	7,5	25,4	10	20
SSC-G12-18	12	1/2	9	25		

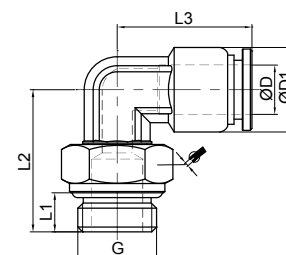


ART. **SSL-G**

Steck-Winkelverschraubung mit O-Ring
 Swivel L male parallel adaptor



CODE	ØD	G	L1	L2	L3	ØD1	🔑
SSL04-M5	4	M5	4	17,5	18,3	10	1
SSL-G04-18	4	1/8	5,5	20	18,3	10	13
SSL06-M5	6	M5	4	17,5	20,3	12	10
SSL-G06-18	6	1/8	5,5	22	20,3	12	1
SSL-G06-14	6	1/4	6,5	23	20,3	12	1
SSL-G08-18	8	1/8	5,5	22,5	22,3	14	13
SSL-G08-14	8	1/4	6,5	23,5	22,3	14	1
SSL-G10-14	10	1/4	6,5	31	26,4	17	17
SSL-G10-38	10	3/8	7,5	28,5	26,4	17	20
SSL-G12-38	12	3/8	7,5	30	29,4	20	20
SSL-G12-12	12	1/2	9	30,5	29,4	20	24

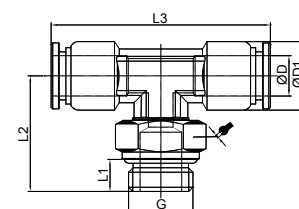


ART. **SSB-G**

T-Steckverschraubung mit O-Ring
 Swivel male stud T parallel



CODE	ØD	G	L1	L2	L3	ØD1	🔑
SSB04-M5	4	M5	4	17,5	36,6	10	1
SSB-G04-18	4	1/8	5,5	20	36,6	10	13
SSB06-M5	6	M5	4	17,5	40,6	12	1
SSB-G06-18	6	1/8	5,5	22	40,6	12	13
SSB-G06-14	6	1/4	6,5	23	40,6	12	16
SSB-G08-18	8	1/8	5,5	22,5	44,6	14	13
SSB-G08-14	8	1/4	6,5	23,5	44,6	14	1
SSB-G10-14	10	1/4	6,5	31	52,8	17	17
SSB-G10-38	10	3/8	7,5	28,5	52,8	17	20
SSB-G12-38	12	3/8	7,5	30	58,8	20	20
SSB-G12-12	12	1/2	9	30,5	58,8	20	24



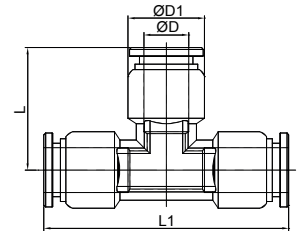


ART. **SSE**

T-Steckverbinder
T connector



CODE	ØD	ØD1	L	L1
SSE04	4	10	18,3	36,
SSE06	6	12	20,3	40,6
SSE08	8	14	22,3	44,6
SSE10	10	17	26,4	52,8
SSE12	12	20	29,4	58,8
SSE14	14	14	37	74

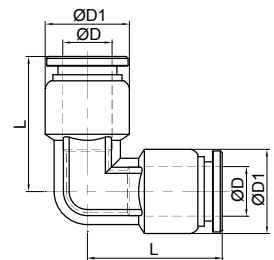


ART. **SSV**

Steck-Winkelverbinder
L connector



CODE	ØD	ØD1	L
SSV04	4	10	18,3
SSV06	6	12	20,3
SSV08	8	14	22,3
SSV10	10	17	26,4
SSV12	12	20	29,4
SSV14	14	22	37

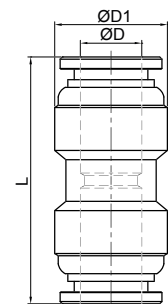


ART. **SSU**

Steck-Geradverbinder
Equal straight connector



CODE	ØD	ØD1	L
SSU04	4	11	
SSU06	6	13	29,5
SSU08	8	15	32,5
SSU10	10	18	36,8
SSU12	12	21	39,8

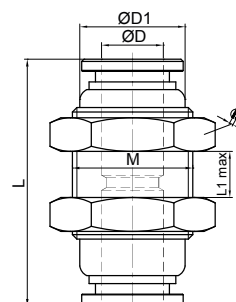


ART. **SSM**

Steck-Schottverbinder
 Bulkhead connector



CODE	ØD	ØD1	L	L1 max	M	
SSM04	4	10	27	8	M12x1	14
SSM06	6	12	29,5		M14x1	17
SSM08	8	14	32,5	8	M16x1	19
SSM10	10	17	36,8	9,5	M20x1	24
SSM12	12	20	39,8	11,5	M22x1	26

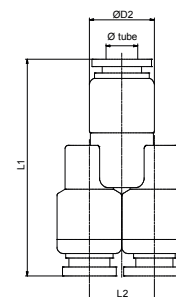


ART. **SSY**

Y-Verbinder
 Y connector



CODE	ØD	L1	L2	D2
SSY04	4	36	14	11
SSY06	6	37,5	16	13
SSY08	8	41,3	18	15
SSY10	10	44,3	21	18
SSY12	12	51	24	21

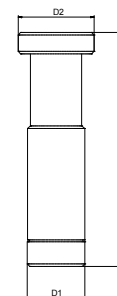


ART. **SSP**

Verschluss
 Plug



CODE	D1	D2	L1
SSP04	6	4	2
SSP06	8	6	3
SSP08	10	8	37
SSP10	12	10	42
SSP12	14	12	44
SSP14	16	14	46





ART. **SSN-G**

Drosselrückschlagverschraubung für Zylinder
Swivel flow regulator for cylinder



CODE	ØD	G	L1	L2	L3	D2
SSN-G04-18	4	1/8	34,5	28	7,5	10,
SSN-G04-14	4	1/4	43	28	9,5	10,5
SSN-G06-18	6	1/8	34,5	28	7,5	12,5
SSN-G06-14	6	1/4	43	28	9,5	12,5
SSN-G08-18	8	1/8	34,5	30	7,5	14,5
SSN-G08-14	8	1/4	43	30	9,5	14,5
SSN-G08-38	8	3/8	47,3	33	10,5	14,5
SSN-G08-12	8	1/2	51	33	12,5	14,5
SSN-G10-14	10	1/4	43	32,5	9,5	17,5
SSN-G10-38	10	3/8	47,3	35	10,5	17,5
SSN-G10-12	10	1/2	51	35	12,5	17,5
SSN-G12-14	12	1/4	43	36	9,5	20,5
SSN-G12-38	12	3/8	47,3	38	10,5	20,5
SSN-G12-12	12	1/2	51	38	12,5	20,5

