

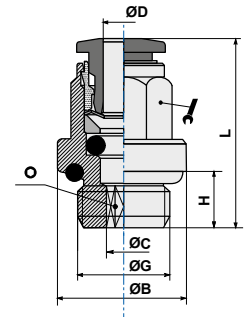


ART. **B01**

Steck-Einschraubverschraubung, gerade mit O-Ring  
Straight male adaptor (parallel)



| CODE    | ØD | G   | ØC   | ØB   | H   | L    |    |     |
|---------|----|-----|------|------|-----|------|----|-----|
| B0104M5 | 4  | M5  | 2,6  | 9    | 4   | 20,5 | 9  | 2   |
| B0104M6 | 4  | M6  | 2,6  | 9    | 5   | 20,5 | 9  | 2   |
| B010418 | 4  | 1/8 | 2,6  | 13,5 | 5,5 | 20   | 9  | 2,5 |
| B010414 | 4  | 1/4 | 2,6  | 17   | 6,5 | 21   | 9  | 2,5 |
| B0106M5 | 6  | M5  | 2,6  | 11   | 4   | 22,8 | 11 | 2   |
| B0106M6 | 6  | M6  | 2,6  | 11   | 5   | 24,8 | 11 |     |
| B010618 | 6  | 1/8 | 4,2  | 13,5 | 5,5 | 25,3 | 11 |     |
| B010614 | 6  | 1/4 | 4,2  | 17   | 6,5 | 24,3 | 11 |     |
| B010818 | 8  | 1/8 | 5,2  | 12,8 | 5,5 | 27   | 13 |     |
| B010814 | 8  | 1/4 | 6,2  | 17   | 6,5 | 25,5 | 13 | 6   |
| B010838 | 8  | 3/8 | 6,2  | 20   | 7,5 | 25,5 | 13 | 6   |
| B011014 | 10 | 1/4 | 7,3  | 16   | 6,5 | 3    |    |     |
| B011038 | 10 | 3/8 | 8,3  | 21   | 7,5 | 30,9 | 16 |     |
| B011012 | 10 | 1/2 | 14,1 | 23   | 10  | 24,7 | 17 | 8   |
| B011214 | 12 | 1/4 | 7,3  | 16   | 6,5 | 33,2 | 19 | 7   |
| B011238 | 12 | 3/8 | 10,3 | 22   | 7,5 | 33,2 | 19 | 10  |
| B011212 | 12 | 1/2 | 10,3 | 24   | 9   | 33,2 | 19 | 1   |
| B011438 | 14 | 3/8 | 10,3 | 21   | 7,5 | 35   | 19 | 10  |
| B011412 | 14 | 1/2 | 12,3 | 25   | 9   | 35   | 19 | 12  |

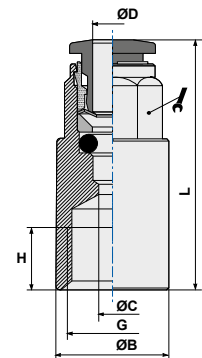


ART. **B02**

Steckverschraubung, mit Innengewinde  
Straight female adaptor



| CODE    | ØD | G   | ØC | ØB | H   | L    |    |
|---------|----|-----|----|----|-----|------|----|
| B020418 | 4  | 1/8 | 3  | 12 | 6,5 | 26,5 | 9  |
| B020414 | 4  | 1/4 | 3  | 17 |     |      |    |
| B020618 | 6  | 1/8 | 5  | 12 | 6,5 | 28,3 | 11 |
| B020614 | 6  | 1/4 | 5  | 17 | 10  | 31,3 | 11 |
| B020818 | 8  | 1/8 | 7  | 12 | 6,5 | 28,5 | 13 |
| B020814 | 8  | 1/4 | 7  | 17 | 10  | 32,5 | 13 |

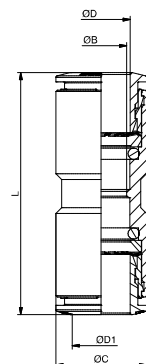


ART. **B03**

Steck-Verbinder, gerade  
Straight connector



| CODE    | ØD | ØD1 | ØB | ØC | L    |
|---------|----|-----|----|----|------|
| B030400 | 4  | 4   | 3  | 11 | 32   |
| B030600 | 6  | 6   | 5  | 13 | 36,1 |
| B030800 | 8  | 8   | 7  | 15 | 3    |
| B031000 | 10 | 10  |    |    |      |
| B031200 | 12 | 12  | 11 | 21 | 45,8 |
| B031400 | 14 | 14  | 13 | 23 | 48,9 |

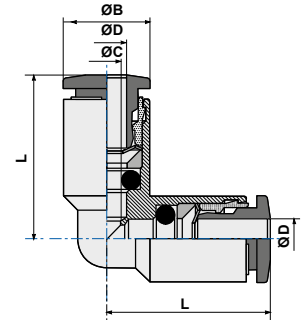


ART. **B04**

Steck-Winkelverbinder  
L connector



| CODE    | ØD | ØC | ØB | L    |
|---------|----|----|----|------|
| B040400 | 4  | 3  | 10 | 19   |
| B040600 | 6  | 5  | 11 | 20   |
| B040800 | 8  | 7  | 13 | 23   |
| B041000 | 10 | 8  | 16 | 26   |
| B041200 | 12 | 10 | 19 | 28,9 |
| B041400 | 14 | 12 | 21 | 31,5 |

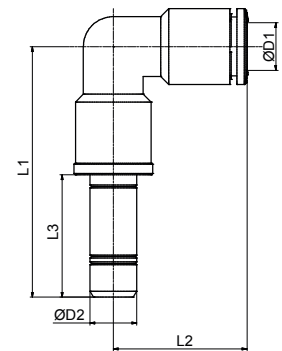


ART. **B04LO**

Steck-Winkelverbinder  
Plug-in L connector



| CODE    | ØD1 | ØD2 | L1   | L2   | L3 |
|---------|-----|-----|------|------|----|
| B0404LO | 4   | 4   | 34,5 | 18   | 16 |
| B0406LO | 6   | 6   | 42,5 | 23   | 19 |
| B0408LO | 8   | 8   | 46,5 | 25,5 |    |
| B0410LO | 10  | 10  | 51   | 27   | 24 |
| B0412LO | 12  | 12  | 54   | 29   | 25 |

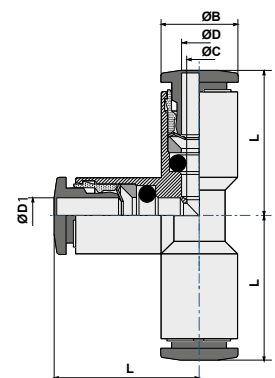


ART. **B05**

Steck-T-Verbinder  
T connector



| CODE    | ØD | ØD1 | ØC  | ØB   | L    |
|---------|----|-----|-----|------|------|
| B050400 | 4  | 4   | 3   | 9    | 17,3 |
| B050600 | 6  | 6   | 5   | 11   | 20,6 |
| B050604 | 6  | 4   | 5,3 | 10,6 |      |
| B050800 | 8  | 8   | 7   | 13   | 2    |
| B050806 | 8  | 6   | 7,1 | 12,5 | 22,5 |
| B051000 | 10 | 10  | 8   | 16   | 26,4 |
| B051008 | 10 | 8   | 9,3 | 15,5 | 25   |
| B051200 | 12 | 12  | 10  | 19   | 28,9 |
| B051210 | 12 | 10  | 10  | 18,5 | 29   |
| B051400 | 14 | 14  | 12  | 21   | 31,5 |



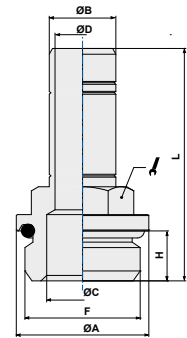


ART. **B06**

Stecker mit Außengewinde, kurz mit O-Ring  
Adaptor parallel (short)



| CODE    | ØB | F   | ØA | ØC  | ØD  | H   | L    |    |
|---------|----|-----|----|-----|-----|-----|------|----|
| B0604M5 | 4  | M5  | 8  | 2   | 2   | 4   | 24,7 | 8  |
| B0604M6 | 4  | M6  | 9  | 2   | 2   | 5   | 25,7 | 8  |
| B060418 | 4  | 1/8 | 13 | 5,5 | 2   | 5,5 | 27,  |    |
| B060414 | 4  | 1/4 | 16 | 7,5 | 2   | 6,5 | 29   |    |
| B0606M5 | 6  | M5  | 8  | 2,6 | 2,6 | 4   | 2    |    |
| B060618 | 6  | 1/8 | 13 | 5,5 | 4   | 5,5 | 30,5 | 13 |
| B060614 | 6  | 1/4 | 16 | 7,5 | 4   | 6,5 | 32,  |    |
| B060818 | 8  | 1/8 | 13 | 6   | 6   | 5,5 | 32,0 | 13 |
| B060814 | 8  | 1/4 | 16 | 7,5 | 6   | 6,5 | 33,5 | 1  |
| B060838 | 8  | 3/8 | 20 | 9   | 6   | 7,5 | 35,5 | 1  |
| B061018 | 10 | 1/8 | 13 | 6   | 6   | 5,5 | 35,0 | 13 |
| B061014 | 10 | 1/4 | 16 | 8   | 8   | 6,5 | 36,5 | 13 |
| B061038 | 10 | 3/8 | 20 | 8   | 8   | 7,5 | 39,5 | 13 |
| B061214 | 12 | 1/4 | 16 | 8   | 8   | 6,5 | 37,5 |    |
| B061238 | 12 | 3/8 | 20 | 11  | 10  | 7,5 | 40,5 | 13 |
| B061212 | 12 | 1/2 | 24 | 13  | 10  | 9   | 42,0 | 16 |
| B061438 | 14 | 3/8 | 20 | 12  | 12  | 7,5 | 43,0 | 16 |
| B061412 | 14 | 1/2 | 24 | 13  | 12  | 9   | 44,5 | 16 |

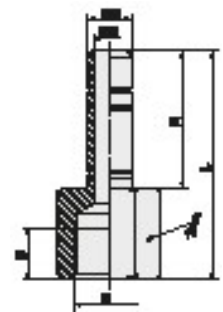


ART. **B06F**

Stecker, kurz mit Innengewinde  
Female parallel adapter



| CODE     | ØD | G   | ØC | B | H    | L    |    |
|----------|----|-----|----|---|------|------|----|
| B06F0418 | 4  | 1/8 | 2  | 7 | 16,7 | 29,7 | 12 |
| B06F0618 | 6  | 1/8 | 4  | 7 | 19,5 | 32,5 | 1  |
| B06F0614 | 6  | 1/4 | 4  | 8 | 19,5 | 35,5 | 17 |
| B06F0814 | 8  | 1/4 | 6  | 8 | 21   | 37   | 17 |

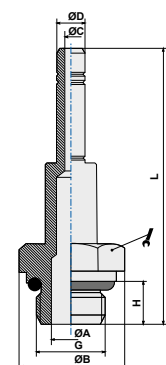


ART. **B60**

Stecker, lang mit O-Ring  
Adaptor parallel long



| CODE    | ØD | G   | ØC | ØB | H   | L    | ØA  |    |
|---------|----|-----|----|----|-----|------|-----|----|
| B600418 | 4  | 1/8 | 2  | 13 | 5   | 39   | 6   | 1  |
| B600618 | 6  | 1/8 | 4  | 13 | 5   | 44,5 | 5,5 | 1  |
| B600614 | 6  | 1/4 | 4  | 16 | 6,5 | 48   | 7,5 | 13 |
| B600818 | 8  | 1/8 | 6  | 13 | 5   | 48   | 6   | 13 |
| B600814 | 8  | 1/4 | 6  | 16 | 6,5 | 49,5 | 7,5 | 13 |
| B600838 | 8  | 3/8 | 6  | 20 | 7,5 | 51,5 | 9   |    |
| B601038 | 10 | 3/8 | 8  | 13 | 7,5 | 57,5 | 9   | 13 |

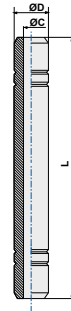


ART. **B07**

Doppelstecker  
Connector



| CODE    | ØD | ØC | L    |
|---------|----|----|------|
| B070400 | 4  | 2  | 33,4 |
| B070600 | 6  | 4  | 39   |
| B070800 | 8  | 6  | 42   |
| B071000 | 10 | 8  | 4    |
| B071200 | 12 | 10 | 50   |
| B071400 | 14 | 12 | 55   |

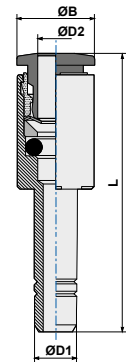


ART. **B08**

Steck-Reduzierverbindung  
Plug-in reducer



| CODE    | ØD1 | ØD2 | ØB | L    |
|---------|-----|-----|----|------|
| B080604 | 6   | 4   | 9  | 32,5 |
| B080804 | 8   | 4   | 9  | 34   |
| B080806 | 8   | 6   | 11 | 3    |
| B081006 | 10  | 6   | 11 | 39   |
| B081008 | 10  | 8   | 13 | 39   |
| B081204 | 12  | 4   | 13 | 40   |
| B081206 | 12  | 6   | 13 | 4    |
| B081208 | 12  | 8   | 13 | 39,5 |
| B081210 | 12  | 10  | 16 | 41,4 |
| B081404 | 14  | 4   | 15 | 43,5 |
| B081406 | 14  | 6   | 15 | 43,8 |
| B081408 | 14  | 8   | 15 | 44   |
| B081410 | 14  | 10  | 16 | 43,9 |
| B081412 | 14  | 12  | 19 | 45,9 |

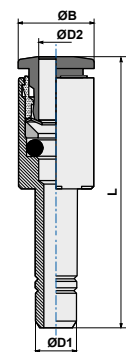


ART. **B08E**

Steck-Erweiterung  
Plug-in increaser



| CODE     | ØD1 | ØD2 | ØB | L    |
|----------|-----|-----|----|------|
| B08E0406 | 4   | 6   | 11 | 35,5 |
| B08E0608 | 6   | 8   | 13 | 3    |



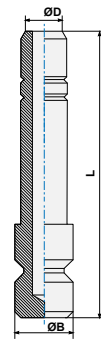


ART. **B09**

Steckverschluss  
Plug



| CODE    | ØD | ØB | L  |
|---------|----|----|----|
| B090400 | 4  | 5  | 26 |
| B090600 | 6  | 7  | 2  |
| B090800 | 8  | 9  | 3  |

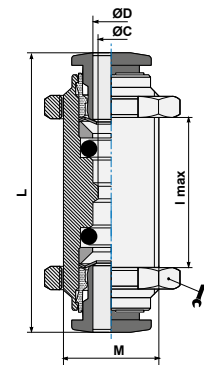


ART. **B10**

Steck-Schottverbinder  
Bulkhead connector



| CODE    | ØD | ØC | M    | I <sub>max</sub> | L    |    |
|---------|----|----|------|------------------|------|----|
| B100400 | 4  | 3  | 11x1 | 8                | 3    |    |
| B100600 | 6  | 5  | 14x1 | 8                | 36,1 | 1  |
| B100800 | 8  | 7  | 16x1 | 10               | 38   | 18 |
| B101000 | 10 | 9  | 18x1 | 12               | 42,3 | 21 |
| B101200 | 12 | 11 | 22x1 | 17               | 45,8 | 26 |
| B101400 | 14 | 13 | 24x1 | 18               | 47,5 | 27 |

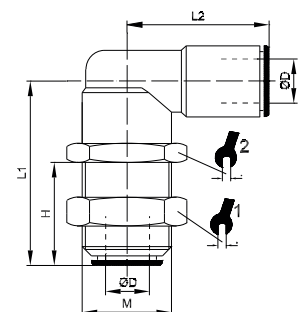


ART. **B10L**

Steck-Winkelschottverbinder  
L bulkhead



| CODE     | ØD | M     | H    | L1   | L2 |    |    |
|----------|----|-------|------|------|----|----|----|
| B10L0400 | 4  | M11x1 | 12,5 | 25,5 | 20 | 13 | 13 |
| B10L0600 | 6  | M14x1 | 15   | 28   | 21 | 17 | 17 |
| B10L0800 |    | M16x1 | 17   | 30,5 | 24 | 18 | 18 |
| B10L1000 | 10 | M18x1 | 19   | 35   | 27 | 21 | 21 |

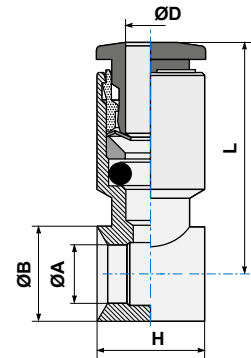


ART. **B13**

Steck-Ringstück 1-fach  
Single banjo body



| CODE    | ØD | G   | ØA    | ØB | H  | L    |
|---------|----|-----|-------|----|----|------|
| B1304M5 | 4  | M5  | 5     | 8  | 9  | 19,5 |
| B130418 | 4  | 1/8 | 9,9   | 14 | 15 | 21,  |
| B130618 | 6  | 1/8 | 9,9   | 14 | 15 | 24,3 |
| B130614 | 6  | 1/4 | 13,3  | 18 | 17 | 25,5 |
| B130818 | 8  | 1/8 | 9,9   | 14 | 15 | 24,8 |
| B130814 | 8  | 1/4 | 13,3  | 18 | 17 | 26,5 |
| B131014 | 10 | 1/4 | 13,3  | 18 | 17 | 28,4 |
| B131038 | 10 | 3/8 | 16,75 | 21 | 20 | 29,9 |
| B131238 | 12 | 3/8 | 16,75 | 21 | 20 | 31,4 |
| B131212 | 12 | 1/2 | 21    | 26 | 24 | 34,9 |

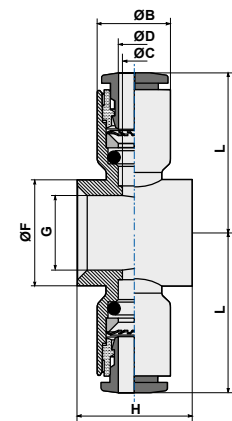


ART. **B14**

T-Steck-Ringstück  
Double banjo body



| CODE    | ØD | G   | ØC | ØB   | H  | ØF   | L    |
|---------|----|-----|----|------|----|------|------|
| B1404M5 | 4  | M5  | 3  | 9,5  | 10 | 8,0  | 19,  |
| B140418 | 4  | 1/8 | 3  | 9,5  | 15 | 14,0 | 21,1 |
| B140618 | 6  | 1/8 | 5  | 11,5 | 15 | 14,0 |      |
| B140614 | 6  | 1/4 | 5  | 11,5 | 17 | 18,0 | 25,  |
| B140818 | 8  | 1/8 | 7  | 13,5 | 15 | 14,0 | 24   |
| B140814 | 8  | 1/4 | 7  | 13,5 | 17 | 18,0 | 26,  |
| B140838 | 8  | 3/8 | 7  | 13,5 | 20 | 21,3 | 28,  |
| B141014 | 10 | 1/4 | 9  | 17,0 | 17 | 18,0 | 2    |
| B141038 | 10 | 3/8 | 9  | 17,0 | 20 | 21,3 | 29,  |

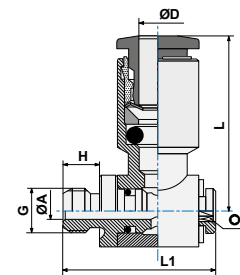


ART. **B15**

Steck-Winkelverschraubung mit Innensechskant  
Complete single banjo (rotating under pressure)



| CODE    | ØD | G   | ØA  | H   | L1   | L    | ⊙   |
|---------|----|-----|-----|-----|------|------|-----|
| B1504M5 | 4  | M5  | 2   | 4   | 16,8 | 19,  |     |
| B1504M6 | 4  | M6  | 2   | 4   | 17,8 | 19,5 | 2,  |
| B150418 | 4  | 1/8 | 5,5 | 5,5 | 25   | 21,1 | 3   |
| B1506M5 | 6  | M5  | 2   | 4   | 16,5 | 22   | 2,5 |
| B150618 | 6  | 1/8 | 5,5 | 5,5 | 24,5 | 24,3 | 3   |
| B150614 | 6  | 1/4 | 7,8 | 6,5 | 28   | 25,5 |     |
| B150818 | 8  | 1/8 | 5,5 | 5,5 | 24,5 | 24,8 | 3   |
| B150814 | 8  | 1/4 | 7,8 | 6,5 | 28   | 26,5 | 4   |
| B150838 | 8  | 3/8 | 10  | 7,5 | 32,5 | 28   | 5   |
| B151014 | 10 | 1/4 | 7,8 | 6,5 | 28   | 28,4 | 4   |
| B151038 | 10 | 3/8 | 10  | 7,5 | 32,5 | 29,9 | 5   |
| B151214 | 12 | 1/4 | 7,8 | 6,5 | 28   | 30,  |     |
| B151238 | 12 | 3/8 | 10  | 7,5 | 32,5 | 31,  |     |
| B151212 | 12 | 1/2 | 12  | 9   | 40,8 | 34,9 |     |
| B151412 | 14 | 1/2 | 12  | 9   | 40,8 | 35,  |     |



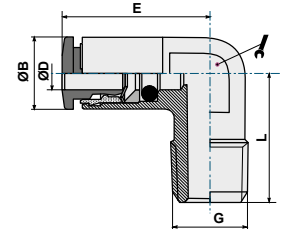


ART. **B19**

Steck-Winkelverschraubung, feststehend, konisch  
L male adaptor



| CODE    | ØD | G   | ØB | E    | L    |    |
|---------|----|-----|----|------|------|----|
| B190418 | 4  | 1/8 | 9  | 18,6 | 16,5 | 10 |
| B190618 | 6  | 1/8 | 11 | 23,8 | 16,5 | 1  |
| B190614 | 6  | 1/4 | 11 | 25,3 | 22,5 | 11 |
| B190818 | 8  | 1/8 | 13 | 25,5 | 18,5 | 11 |
| B190814 | 8  | 1/4 | 13 | 25,5 | 22,0 | 11 |
| B191014 | 10 | 1/4 | 16 | 28,0 | 24,0 | 13 |

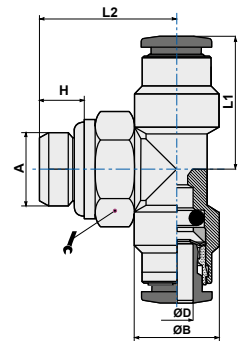


ART. **B20**

T-Steckverschraubung mit Außensechskant und O-Ring  
Swivel male stud T parallel



| CODE    | ØD | A   | H   | ØB    | L1   | L2   |    |
|---------|----|-----|-----|-------|------|------|----|
| B2004M5 | 4  | M5  | 4   | 9     | 17,3 | 20,0 | 8  |
| B200418 | 4  | 1/8 | 5,5 | 11,40 | 17,3 | 18,5 | 1  |
| B200414 | 4  | 1/4 | 6,5 | 9     | 19,0 | 22,5 |    |
| B200618 | 6  | 1/8 | 5,5 | 11    | 19,5 | 18,  |    |
| B200614 | 6  | 1/4 | 6,5 | 11    | 22,1 | 22,  |    |
| B200818 | 8  | 1/8 | 5,5 | 13    | 23,0 | 20,5 | 13 |
| B200814 | 8  | 1/4 | 6,5 | 13    | 23,0 | 22,5 | 16 |
| B200838 | 8  | 3/8 | 7,5 | 13    | 24,5 | 25,5 | 18 |
| B201014 | 10 | 1/4 | 6,5 | 16    | 26,4 | 24,5 | 16 |
| B201038 | 10 | 3/8 | 7,5 | 16    | 26,4 | 25,5 | 18 |

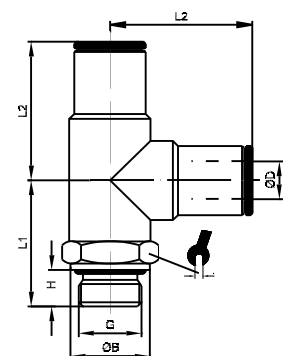


ART. **B21**

L-Steckverschraubung mit Außensechskant und O-Ring  
Swivel male branch T parallel



| CODE    | ØD | G   | H | ØB | L1   | L2   |    |
|---------|----|-----|---|----|------|------|----|
| B2104M5 | 4  | M5  | 4 | 8  | 16,5 | 19   | 9  |
| B210418 | 4  | 1/8 | 6 | 13 | 18,5 | 17,5 | 13 |
| B210414 | 4  | 1/4 | 8 | 16 | 22,5 | 19   | 13 |
| B210618 | 6  | 1/8 | 6 | 13 | 20   | 21   | 1  |
| B210614 | 6  | 1/4 | 8 | 16 | 24   | 21   | 13 |
| B210818 | 8  | 1/8 | 6 | 13 | 20   | 23   | 13 |
| B210814 | 8  | 1/4 | 8 | 16 | 24   | 23   | 13 |
| B210838 | 8  | 3/8 | 9 | 20 | 25,5 | 23   | 13 |
| B211014 | 10 | 1/4 | 8 | 16 | 24   | 27   | 16 |
| B211038 | 10 | 3/8 | 9 | 16 | 24   | 27   | 18 |

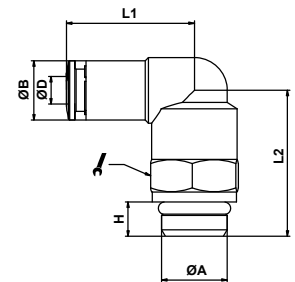


ART. **B22**

Steck-Winkelverschraubung mit Außensechskant & O-Ring  
Swivel L male adaptor parallel



| CODE    | ØD | A   | H  | ØB  | L1   | L2   |    |
|---------|----|-----|----|-----|------|------|----|
| B2204M5 | 4  | M5  | 4  | 9,1 | 17,3 | 14,8 | 9  |
| B220418 | 4  | 1/8 | 6  | 9,1 | 18,0 | 20,0 | 13 |
| B220414 | 4  | 1/4 | 8  | 9,1 | 18,0 | 24,0 | 13 |
| B2206M5 | 6  | M5  | 4  | 11  | 14,5 | 21,0 | 9  |
| B220618 | 6  | 1/8 | 6  | 11  | 23,0 | 20,0 |    |
| B220614 | 6  | 1/4 | 8  | 11  | 23,0 | 24,0 | 13 |
| B220818 | 8  | 1/8 | 6  | 13  | 25,5 | 20,3 |    |
| B220814 | 8  | 1/4 | 8  | 13  | 25,5 | 24,  |    |
| B220838 | 8  | 3/8 | 9  | 13  | 25,5 | 25,8 | 13 |
| B221014 | 10 | 1/4 | 8  | 16  | 27,0 | 26,0 | 16 |
| B221038 | 10 | 3/8 | 9  | 16  | 27,0 | 27,5 | 16 |
| B221012 | 10 | 1/2 | 11 | 16  | 27,0 | 27,5 | 16 |
| B221214 | 12 | 1/4 | 8  | 19  | 29,0 | 30,5 | 16 |
| B221238 | 12 | 3/8 | 9  | 19  | 29,0 | 28,5 |    |
| B221212 | 12 | 1/2 | 11 | 19  | 29,0 | 33,5 | 20 |
| B221438 | 14 | 3/8 | 9  | 21  | 32,0 | 28,5 | 2  |
| B221412 | 14 | 1/2 | 11 | 21  | 32,0 | 33,5 | 20 |

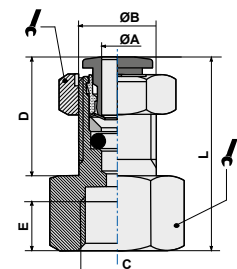


ART. **B25**

Steck-Manometerschraubung  
Female bulkhead



| CODE    | ØA | C   | ØB    | D    | E    | L    |    |
|---------|----|-----|-------|------|------|------|----|
| B250418 | 4  | 1/8 | M12x1 | 15,5 | 8,5  | 24,0 | 14 |
| B250618 | 6  | 1/8 | M14x1 | 15,8 | 8,5  | 26,8 | 15 |
| B250614 | 6  | 1/4 | M14x1 | 15,8 | 11,0 | 29,5 | 17 |
| B250818 | 8  | 1/8 | M16x1 | 16,0 | 8,5  | 26,5 | 19 |
| B250814 | 8  | 1/4 | M16x1 | 16,0 | 11,0 | 32,0 | 19 |

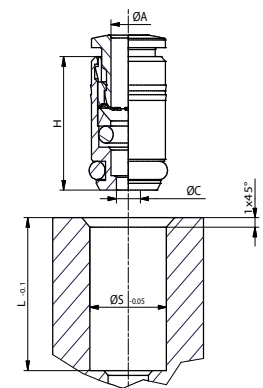


ART. **B27**

Einpress-Patrone  
Cartridge



| CODE    | ØD | ØC  | H  | ØS   | L    |
|---------|----|-----|----|------|------|
| B270400 | 4  | 2,9 | 14 | 9,1  | 13,5 |
| B270600 | 6  | 5   | 16 | 11,1 | 15,5 |
| B270800 | 8  | 7   | 17 | 1    |      |





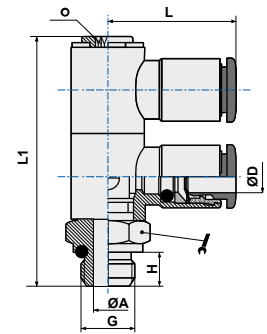


ART. **B33**

Steck-Doppelwinkelverschraubung mit O-Ring  
Swivel double banjo stem



| CODE    | ØD | G   | ØA  | H   | L1   | L    |    |   |
|---------|----|-----|-----|-----|------|------|----|---|
| B330418 | 4  | 1/8 | 5,5 | 5,5 | 43,8 | 21,1 |    |   |
| B330618 | 6  | 1/8 | 5,5 | 5,5 | 43,8 | 24,3 |    |   |
| B330614 | 6  | 1/4 | 7,8 | 7,5 | 51,5 | 25,5 | 1  |   |
| B330818 | 8  | 1/8 | 5,5 | 5,5 | 43,8 | 24,8 |    |   |
| B330814 | 8  | 1/4 | 7,8 | 7,5 | 51,5 | 26,5 | 1  |   |
| B331014 | 10 | 1/4 | 7,8 | 7,5 | 51,5 | 28,4 | 18 | 4 |

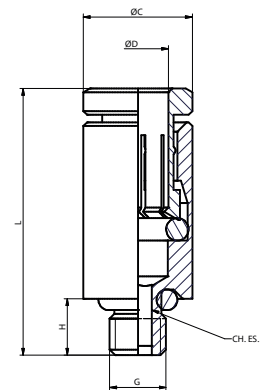


ART. **RDR**

Geradverschraubung, zylindrisch mit O-Ring  
Straight male adaptor (parallel)



| CODE    | D   | G  | C   | H   | L    |     |
|---------|-----|----|-----|-----|------|-----|
| RDR3.30 | 3,0 | M3 | 5,8 | 3   | 14,5 | 1,5 |
| RDR5.20 | 2,0 | M5 | 5,4 | 3,5 | 13,0 | 1,5 |
| RDR5.30 | 3,0 | M5 | 5,8 | 3,5 | 14,5 | 2,0 |
| RDR5.40 | 4,0 | M5 | 5,8 | 3,5 | 16,5 | 2,0 |



ART. **RGR**

Winkelverschraubung, zylindrisch mit O-Ring  
Complete single banjo with stem



| CODE    | D   | G  | C   | H   | L    | L1   |     |
|---------|-----|----|-----|-----|------|------|-----|
| RGR3.30 | 3   | M3 | 1,4 | 3,0 | 13,5 | 13,5 | 1,5 |
| RGR5.20 | 2   | M5 | 2,0 | 3,5 | 14   | 14   | 2,0 |
| RGR5.30 | 3   | M5 | 2,0 | 3,5 | 14   | 14   | 2,0 |
| RGR5.40 | 4,2 | M5 | 2,0 | 3,5 | 13,5 | 13,5 | 2,0 |

