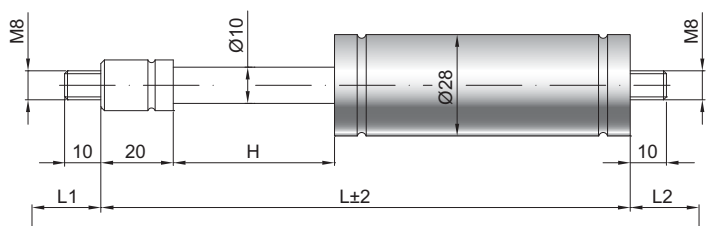


Gaszugfeder Z 10-28

Zugkraft F1	150 - 1200 Newton
Progression	20 %
Kolbenstange	Ø 10 mm, Stahl hartverchromt
Druckrohr	Ø 28 mm, Stahl schwarz lackiert
Anschlüsse	Stahl blau verzinkt

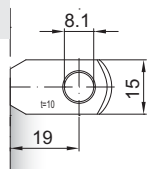
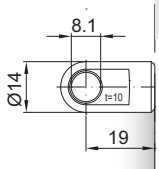
GZ 10

GZ 10



AU 19

AR 19



Details

Standardhöhe H (mm)
 20, 50, 60, 70, 80, 100, 110, 120, 130,
 150, 160, 180, 200, 210, 220, 250, 260, 300,
 350, 360, 400, 450, 500, 600

Standardlänge GL
 $L = 2 \times H + 100$
 $GL = L + L1 + L2$

Standardlieferungumfang
 Ventil an der Kolbenstange

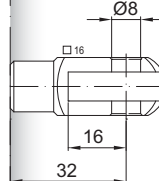
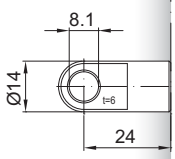
Extras
 4 - Fettkammer
 6 - Schutzrohr
 B3 - Dichtsystem
 NT - Niedertemperaturlösung
 HT - Hochtemperaturlösung

Gewindezapfen auch mit M10 lieferbar

Weitere **Anschlüsse** finden Sie hier [▶](#)
 Passende **Beschläge** finden Sie hier [▶](#)

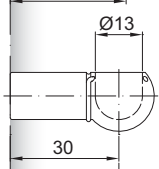
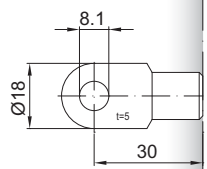
AS 24

GA 32



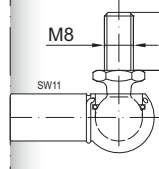
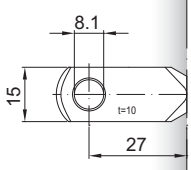
AS 30

PF 30



AR 27

WG 30



AG 36

WX 30

