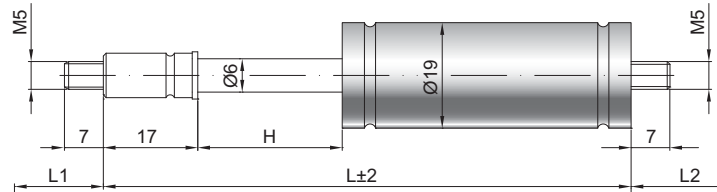


Gaszugfeder Z 06-19

Zugkraft F1	30 - 330 Newton
Progression	10 %
Kolbenstange	Ø 6 mm, Stahl hartverchromt
Druckrohr	Ø 19 mm, Stahl schwarz lackiert
Anschlüsse	Stahl blau verzinkt

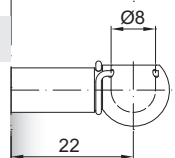
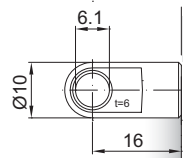
GZ 7

GZ 7



AU 16

PF 22



Details

Standardhöhe H (mm)
30, 50, 60, 70, 80, 100, 120, 140, 150, 180, 200, 250, 300

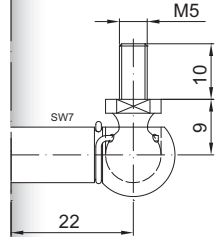
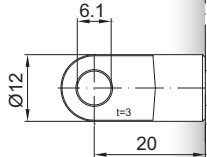
Standardlänge GL
 $L = 2 \times H + 100$
 $GL = L + L1 + L2$

Standardlieferumfang
Ventil an der Kolbenstange

- Extras**
- 4 - Fettkammer
 - 6 - Schutzrohr
 - B3 - Dichtsystem
 - NT - Niedertemperaturlösung
 - HT - Hochtemperaturlösung
- Gewindezapfen auch mit M8 lieferbar

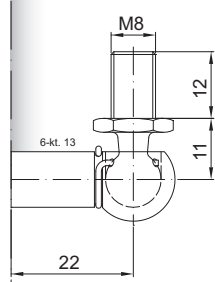
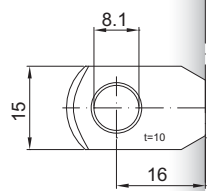
Weitere **Anschlüsse** finden Sie hier [▶](#)
Passende **Beschläge** finden Sie hier [▶](#)

AS 20



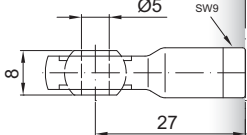
WG 22

AR 16

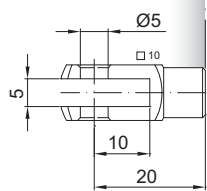


WX 22

AG 27



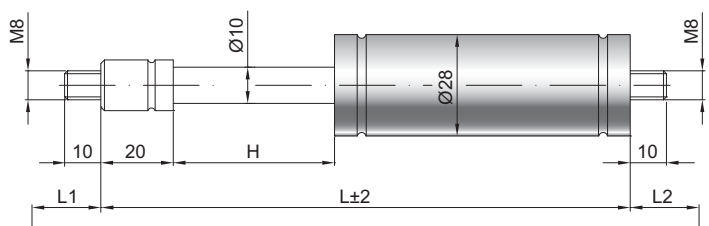
GA 20



Gaszugfeder Z 10-28

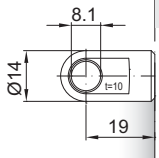
Zugkraft F1	150 - 1200 Newton
Progression	20 %
Kolbenstange	Ø 10 mm, Stahl hartverchromt
Druckrohr	Ø 28 mm, Stahl schwarz lackiert
Anschlüsse	Stahl blau verzinkt

GZ 10



GZ 10

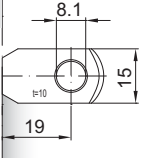
AU 19



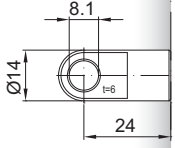
Details

Standardhöhe H (mm)
 20, 50, 60, 70, 80, 100, 110, 120, 130,
 150, 160, 180, 200, 210, 220, 250, 260, 300,
 350, 360, 400, 450, 500, 600

AR 19

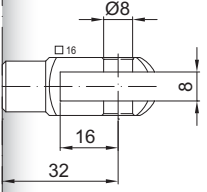


AS 24

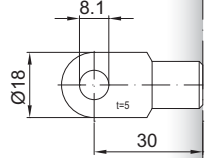


Standardlänge GL
 $L = 2 \times H + 100$
 $GL = L + L1 + L2$

GA 32

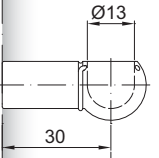


AS 30

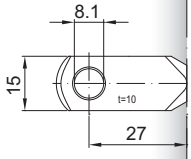


Standardlieferungumfang
 Ventil an der Kolbenstange

PF 30

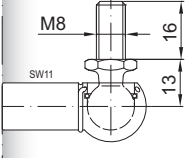


AR 27

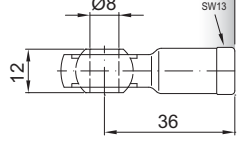


Extras
 4 - Fettkammer
 6 - Schutzrohr
 B3 - Dichtsystem
 NT - Niedertemperaturlösung
 HT - Hochtemperaturlösung
 Gewindezapfen auch mit M10 lieferbar

WG 30

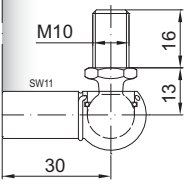


AG 36



Weitere **Anschlüsse** finden Sie hier [▶](#)
 Passende **Beschläge** finden Sie hier [▶](#)

WX 30

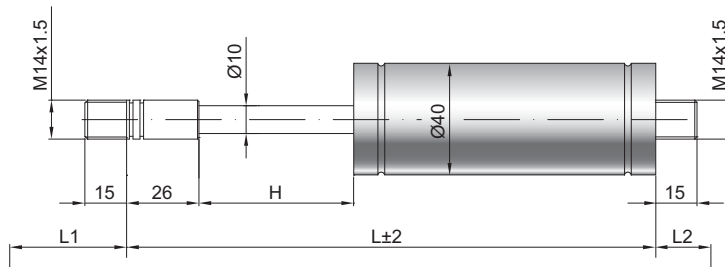


Gaszugfeder Z 10-40

Zugkraft F1	200 - 2000 Newton
Progression	40 %
Kolbenstange	Ø 10 mm, Stahl hartverchromt
Druckrohr	Ø 40 mm, Stahl schwarz lackiert
Anschlüsse	Stahl blau verzinkt

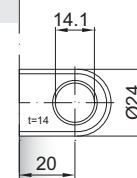
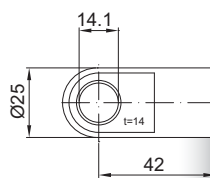
GZ 15

GZ 15



AU 42

AZ 20



Details

Standardhöhe H (mm)

10, 40, 50, 60, 70, 90, 100, 110, 120,
140, 150, 170, 190, 200, 210, 240, 250,
290, 340, 350, 390, 440, 490, 590

Standardlänge GL

$L = 2 \times H + 150$
 $GL = L + L1 + L2$

Standardlieferumfang

Ventil an der Kolbenstange

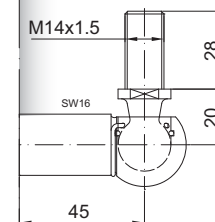
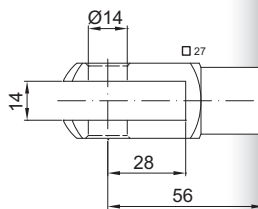
Extras

4 - Fettkammer
6 - Schutzrohr
B3 - Dichtsystem
NT - Niedertemperaturlösung
HT - Hochtemperaturlösung

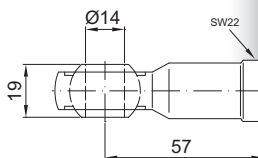
Nur am Zylinder möglich

GA 56

WG 45



AG 57



Gaszugfeder Z 28-40

Zugkraft F1	500 - 5000 Newton
Progression	40 %
Kolbenstange	Ø 28 mm, Stahl hartverchromt
Druckrohr	Ø 40 mm, Stahl schwarz lackiert
Anschlüsse	Stahl blau verzinkt

GZ 18

GZ 18

